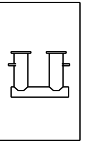
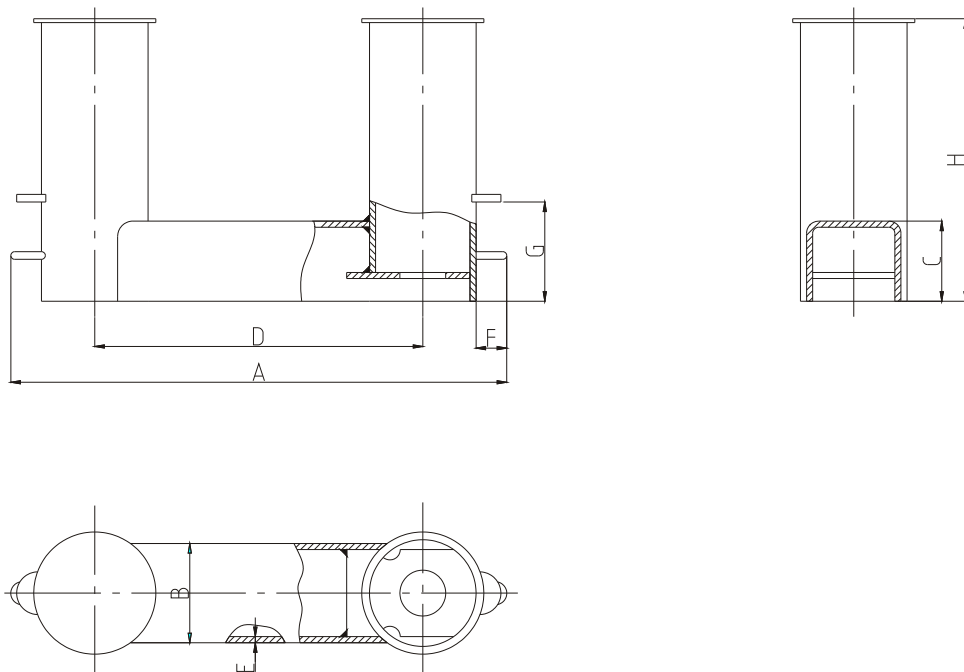


## bollards



BMP delivers a wide range of double and single bollards all to ISO and DIN standard, see draw and tables below.

### „DIN type”



Type DIN	Pipe dimensions ( d x S	A	B	C	D	E	F	G	H	I	J
1	168x6,3	730	180	95	430	6	65	150	420	25	200
2	193,7x8	825	210	110	500	6	65	160	450	30	250
3	219,1x10	950	230	120	580	8	75	170	520	35	300
4	273x11	1123	300	135	700	8	75	180	650	40	325
5	323,9x12,5	1360	330	155	880	9	80	220	720	50	400
6	355,6x17,5	1570	360	175	1050	10	80	250	770	55	425
7	406,2x20	1800	420	190	1150	12	120	270	870	60	500
8	457x22,2	1970	460	210	1250	14	130	320	980	70	525
9	508x17,5	2058	545	230	1350	16	100	345	970	80	600